



Orthopaedics & Rehabilitation Products

Our orthopaedic and rehabilitation products comprise of a variety of adjustable rehabilitation braces for support, protection and rehabilitation of different musculoskeletal parts after injury or surgery.



Adjustable Elbow Splint with Handle

Adjustable Elbow Splint with a handle is designed to be used in a post-operative period without damaging the healing tissue. Its articulation with the handle part provides full support and ergonomic support for hand and minimise the loading.



Product Features

- The Hinge bars extendable from 16" - 20" (40.6cm - 50.4cm) which fits for most patients.
- One size fits all. Adjustable bar for both forearm and upper arm.
- Protected range of motion from 0° to 120° and/or lock the arm in any position from 0° to 120° in 10° increments.
- Facilitates healing by maintaining proper post-op positioning.
- Comfortable with a removable hand grip adjustable strap for the neck with separate neck pad.
- The handgrip ball can help to promote blood circulation of the arm.

Indications

- Elbow stiffness
- Dislocations
- Ulnar Lateral Collateral Ligament (ULCL) Injuries
- Articular problems
- Brachialis Anterior muscle problems
- Trauma involving fractures
- Elbow instabilities
- Postoperative treatment after elbow stabilisation



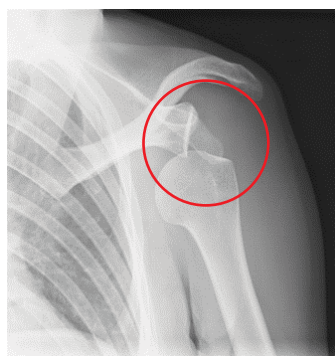
Dislocation of elbow joint ³

Product Information

Product Name	Size	Description	Measurement	Colour
Adjustable Elbow Brace	Universal	Left	16"-20"	Black
	Universal	Right	16"-20"	Black

³ <http://radiopaedia.org/articles/elbow-dislocation>

Arm Sling



Arm Sling is used to prevent further dislocation and hold the shoulder in its place.⁴

Indications

- Reduces shoulder pain
- Prevents further injury
- Provides immobilisation
- Provides support to shoulder complex
- Reduces the risk of subluxation in stroke patients
- Alleviates soft tissue problems (sprain / strain)

Product Information

Size : XS / S / M / L / XL

Limb Holder

The limb holder provides positioning of the Limb during immobilisation period.



Indications

- Positioning of limb
- Risk of unplanned extubations

Product Information

Size : Universal

⁴ <http://www.sportsinjuryclinic.net/sport-injuries/shoulder-pain/dislocated-shoulder>

Wrist Orthosis



Carpal Tunnel Syndrome

Product Features

- Easily worn around the wrist
- Provides immobilisation
- Provides compression
- Stabilises the joint

Indications

- Carpal Tunnel Syndrome
- Mild wrist trauma without fractures
- Synovitis
- Sprains
- Inflammation
- Post-surgical support

Product Information

Size : Universal
Description : Left, Right

Thumb & Wrist Brace



osteoarthritis & degenerative joint disease of thumb ⁵

Indications

- Initial immobilisation of a displaced distal radial fracture
- Immobilisation of the thumb
- Immobilisation after surgical and nonsurgical treatment
- Wrist buckle fractures
- Soft tissue injuries
- Acute management of injuries awaiting orthopedic intervention
- Osteoarthritis & degenerative joint disease

Product Information

Size : Universal
Description : Left, Right

⁵ <http://regenmedsr.com/what-can-be-treated-with/untitled-4.html>

Adjustable Knee Brace

Our adjustable knee brace allows the user to adjust the length of the hinge bar for custom fitting. This product is ideal for knee ligament damage, an unstable knee and for a postoperative rehabilitation period. (ie. Fixation surgery, limitation of range of motion etc)



ACL surgery ⁶

Meniscal replacement ⁷

Indications

- Postoperative conditions / after ACL, PCL, MCL, LCL reconstruction
- After meniscus repair / meniscus replacement
- Anterior Cruciate Ligament (ACL) deficiency
- Medial or Lateral Collateral Ligament (MCL / LCL), posterior cruciate ligament (PCL) deficiency
- Unstable knee
- Painful osteoarthritis
- Tibial plateau fractures
- Patella tendon repair
- Sprains / strains

Product Features

- The hinge bars extendable from 16.5" - 27" (42cm – 68.5cm) which fit for most patients.
- Hinge range of motion adjustment: Flexion (0° to 120°) and extension (0° to 90°).
- Quick lock key offers ability to control the hinge motion to -10°, 15° and 30° directly.
- The hinge bar locking system provides security to users.
- Light in weight and material breathable.
- Easy application with hook and buckle closure.
- Materials passed biocompatibility and latex free.
- Universal size, design fits either left or right leg.

Benefits

- Provides pain relief
- A medial and lateral bar with varying hinge and straps to provide stability de-rotation and prevent significant motion and speed.
- Flexion – extension settings
- Can be used in acute stage immediately after injury and in late stage during rehabilitation as long as protection required
- Stabilises capsular knee ligaments
- Reduces compressive forces that results in less pain and greater mobility
- Prevents knee hyperextension
- Protection against lateral impact

Product Information

Size : Universal

⁶ <http://m3.wyanokecdn.com/8ff232cb973c91e620719adb84ad2e23.jpg>

⁷ <http://www.orthop.washington.edu/orthodev/drupal/sites/default/files/Portals/21/LiveContent/8584/Images/figure7.jpg>

Hinged Knee Brace



Hinged knee braces are used for the patients who need medio-lateral support (valgus stability) but not restricted knee flexion angle.

Indications

- Medio-lateral Instability
- Knee Osteoarthritis
- Knee joint pain
- Sprain/ Strain
- Tendonitis

Product Information

Size : S / M / L

Ankle Brace with Strap



Benefits

- Stabilises the ankle joint
- Compresses the ankle joint
- Provides medio-lateral control of ankle joint
- Soft-tissue support
- Straps are adjustable
- Ideal during all sports

Product Information

Size : XXS / XS / S / M / L / XL

Indications

- Ankle joint pain
- Sprain / Strain
- Tarsal Tunnel Syndrome
- Swollen ankle
- Arthritis, bursitis and tendonitis
- Instability

Airpad Ankle Brace



Slight ankle dislocation where Airpad ankle brace is used.

Benefits

- Prevents sudden ankle movements
- Reduces reactive muscle response
- Provides joint stabilisation
- Compress the ankle joint
- Provides stability during stair descending and landing on the ground
- Comfortable around bony area
- Helps calm pain and swelling
- Avoid injuries

Indications

- Ankle dislocations
- Ankle sprain / strain
- Twisted ankle injury
- Pain and swelling

Product Information

Size : Universal

Heel Pillow



Benefits

Provides stability during stair descending and landing on the ground

Product Information

Size : Small / Regular

Indications

- Excessive pressure caused by immobilisation
- Heel pressure ulcers
- Heel pain



Rehab-Robotics Company Ltd.

Unit 307, 3/F, 12W Building, Phase 3, Hong Kong Science
Park, 12 Science Park West Avenue, Sha Tin, Hong Kong

Tel: (+852) 2416 4832
Fax: (+852) 2437 9407
info@rehab-robotics.com

www.rehab-robotics.com

